

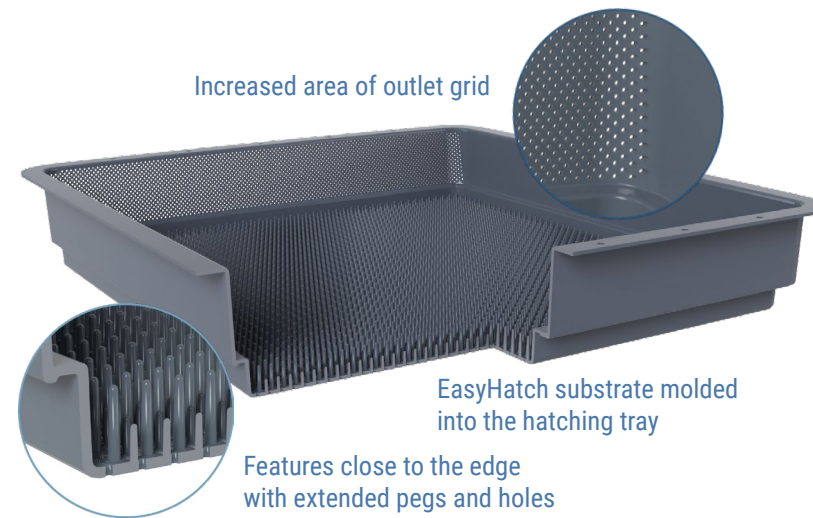
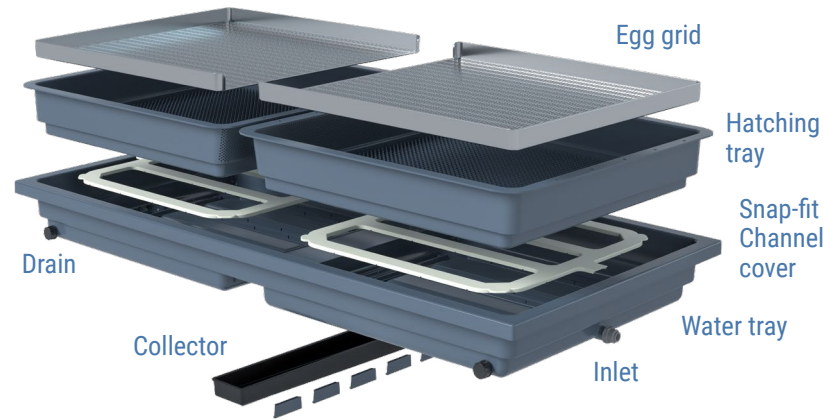
## Leading hatchery even better

- Complete hatching system for salmonids
- Hatching tray and EasyHatch substrate molded in one piece
- Reduced number of components
- Better water flow
- More user-friendly design
- Capacity of 360,000 eggs and fry



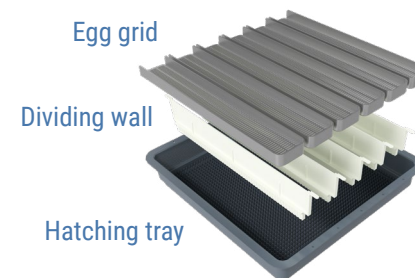
## New design features

- EasyHatch substrate and hatching trays are molded in one piece for easier cleaning
- Water tubes are replaced with built-in water channels. Snap-fit channel covers ensure a tight fit
- Substrate are improved with more holes along the tray walls which make better conditions for the fry
- Improved design of the trays enhances cleanliness and hygiene and leads to less issues with fungus or bacteria
- Reduced number of components for easier service and cleaning
- Increased outlet grid by additional 15% for higher water flow capacity
- Collectors fit tightly under the main trays preventing overflow



**Ready for AutoTend**

The more compact trays open up for automatic tending of eggs and fry by our new robot AutoTend

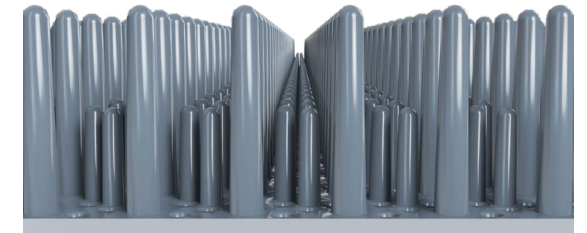


## Retrofit upgrade to CompHatch

New trays can easily be retrofitted in older systems with only a few adjustments. To upgrade to the CompHatch you only need to change the main tray, hatching basket and water collectors. Framework, inlet and outlet can be kept as-is.

## Smoother surface

The new EasyHatch substrate is molded together with the CompHatch trays. The new manufacturing process also ensures that all the pegs have smooth rounded tips, which prevent inflicting damages to the fry.



## Water channels built into main tray

The water tubes have been replaced with snap-fit built-in water channel covers. This allows for more efficient cleaning between batches. Snap-fit channel covers ensure a tight fit.



## Family sections for breeding

The new design allows for easy installation of smaller family sections separating eggs for breeding.

## Automatic tending of fry and eggs

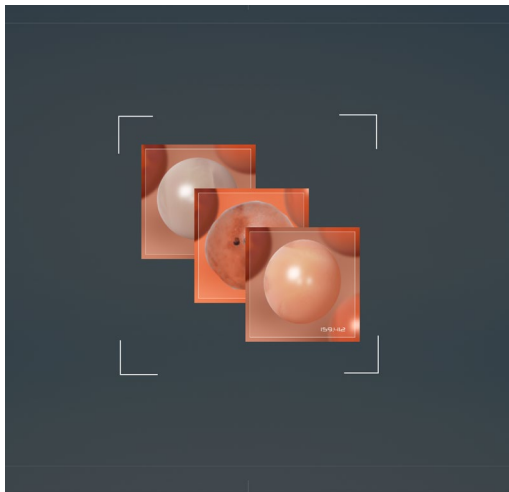
The slim design of the new CompHatch trays allows for installation of the intelligent AutoTend system for automatic robotic tending of fry and eggs. AutoTend require minimal human interaction.

## Rigid construction

The AutoTend system has been built from the ground up to be rigid, stable and ready for continuous operation with minimal maintenance for many years to come. Safety is important, and the AutoTend system is designed so that the motors/robot will stop momentarily if it meets a slight counterforce/resistance/obstacle.

## Advanced vision system

The AutoTend houses an advanced vision system that allows for a dual evaluation of the object before it gets discarded. Meaning no healthy eggs or fry will be discarded by accident.



97 % less time usage on tending

Delicate handling

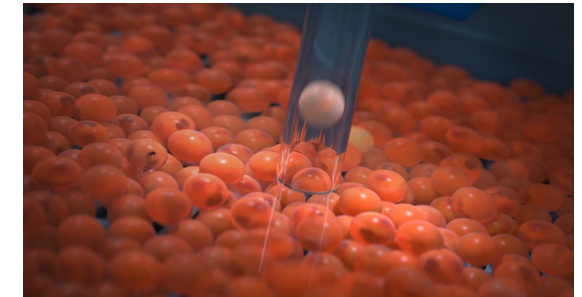


## Retrofit

The AutoTend system are ready for retrofitting to our new CompHatch. In a few steps it is possible to retrofit to older systems as well.

## Delicate handling

Delicate handling of roe and fry using suction to extract, and pressure to move the top layers of roe and fry to access the bottom layer.



## Minimal time usage

Together with our customers we have estimated that hours spent on tending 3 CompHatch is around 1500 hours per year. The AutoTend system requires far less manual labor and will be a very profitable investment.

## AutoTend vs. manual labor per year

Number of CompHatch	3	6	15
AutoTend	50	100	250
Manual	1500	3000	7500
Hours saved	1450	2900	7250